



COMPANY PROFILE

A Unit of RDSO Approved & MSME
Registered Manufacturer

Firm code: AI

ANINDITA INDUSTRIES

AN ISO 9001:2015 COMPANY

Manufactured & Supply of Railway Points
& Crossings with Accessories, Glued
Insulation Rail Joints & P-Way Material
with Accessories

WORKS

Village-Chakkamaria, P.O.: Jalabiswanathpur
P.S. : Panchla, Howrah-711322, West Bengal

SALES OFFICE

3, Biprodas chatterjee lane, Howrah - 711102
Email: -sales.anindita@gmail.com

HEAD OFFICE

69, Shaik Para Lane, Howrah-711103,
West Bengal
Phone : 033-26426313/9830078093
E-mail : anindita_industries@yahoo.com

B. PANJA (Proprietor)

Anindita Industries

COMPANY PROFILE

Today “ANINDITA INDUSTRIES” is a trusted name in the area of fabrication of various Railway Track Components. Established in 2004 and committed to produce and supply the best quality products for Indian Railways.

With our integrated and fully customized solutions we are able to cater to the ever changing Market needs and committed to deliver products in the field of MS fabrication to our valued customers across the country.

We have a pool of trained and specialized Engineers and Technicians who are expert in installation and commissioning of Track laying components.

QUALITY POLICY

It is the quality policy of Anindita Industries to achieve excellence in provision of products through continual improvement in effectiveness of the quality management system to satisfy customers' needs and expectations.

We are also committed to comply with requirement of ISO 9001-2015 and continually improve the effectiveness of our QAP.

QUALITY OBJECTIVE

Following are quality objective, which are to be fulfilled in order to satisfy and enhance the satisfaction of the customers.

1. To have a strong focus on customer need and satisfaction regarding our product and services with quality.
2. To ensure continual improvement of product and service to provide value for money to our customers.
3. To achieve 100 % Performance just in time delivery of products to customer(s).



CORRESPONDENCE DETAILS

Name of Company:	ANINDITA INDUSTRIES
Address (Office):	69, Shaik Para Lane, Howrah – 711103. P.O - B.Garden, West Bengal, India.
Sales Office Address:	3, Biprodas chatterjee lane, Howrah - 711102
Address (Work Shop)	Vill. Chakkamaria, Post: Jalabiswanathpur,P.S. Panchla, Horah-711322. West Bengal, India.
Constitution of Firm:	Proprietorship
Name of Proprietor:	BIPUL KUMAR PANJA
Land Line No.	033 2642-6313
Mobile No.:	+91 9830078093
E-Mail:	anindita_industries@yahoo.com sales.anindita@gmail.com
Website:	www.aninditaindustries.com
Category of NSIC:	Small
Manufacturing Type:	Permanent Way Material (Railway Track Fittings)
PAN No.:	ALCPP2557N
GSTN No.:	19ALCPP2557N1ZJ
GEM ID	4C50200001232160
UAM	UDYAM-WB-08-0008152

BANK DETAILS

Account Holder Name	ANINDITA INDUSTRIES
Banker Name	INDIAN BANK
Branch	SHIBPUR
Branch Address	185,Shibpur Road, 1st Floor,Super Market Howrah - 711102 West Bengal
IFS Code	IDIB000S088
Account Number	493326677

WE ARE RDSO APPROVED MANUFACTURER.



1. Thick Web Switches



2. Thick Web SEJ



3. Glued Insulation Rail Joint



4. Spring Setting Device (SSD)

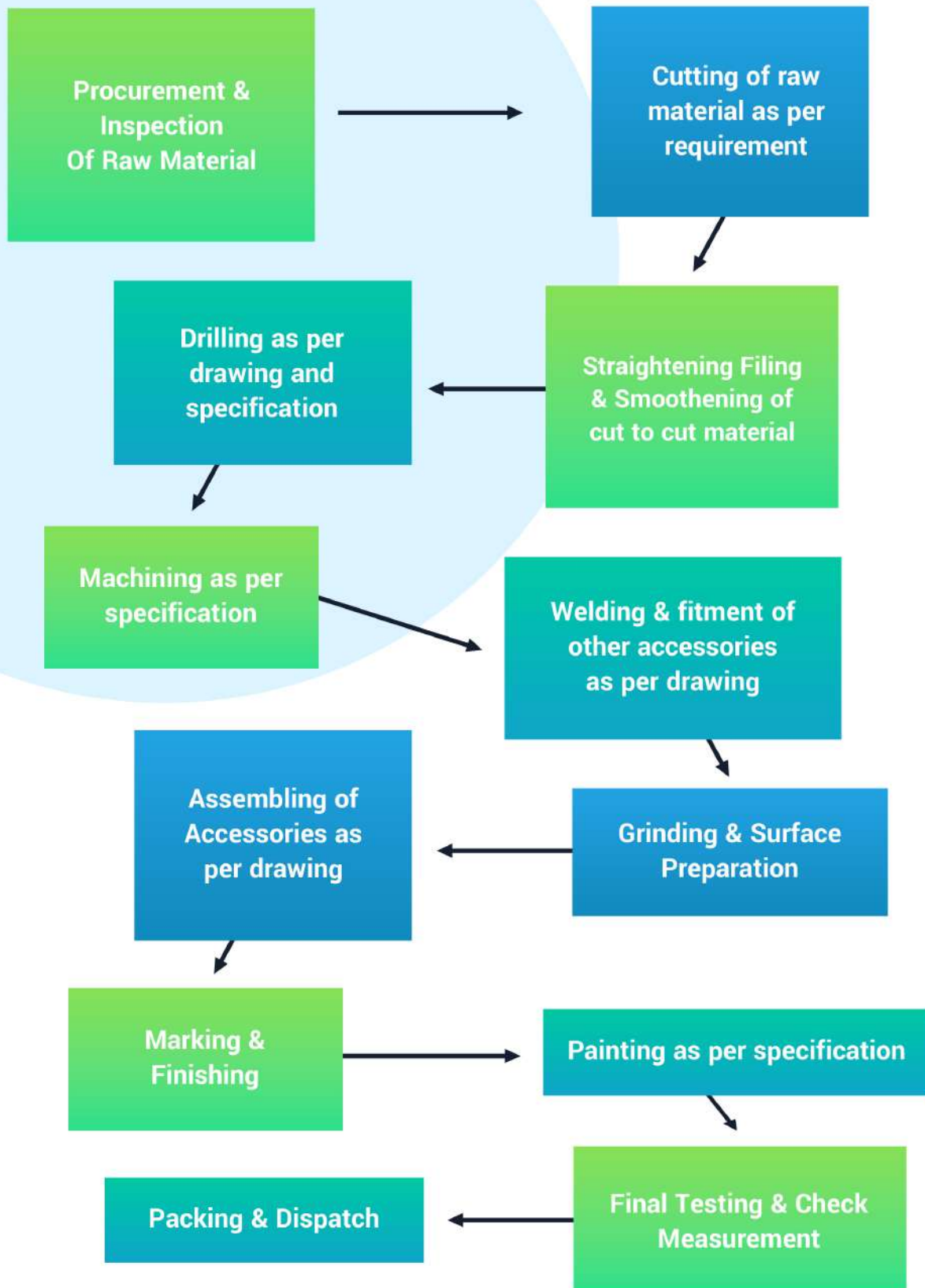


5. Zero Toe Load Fastening

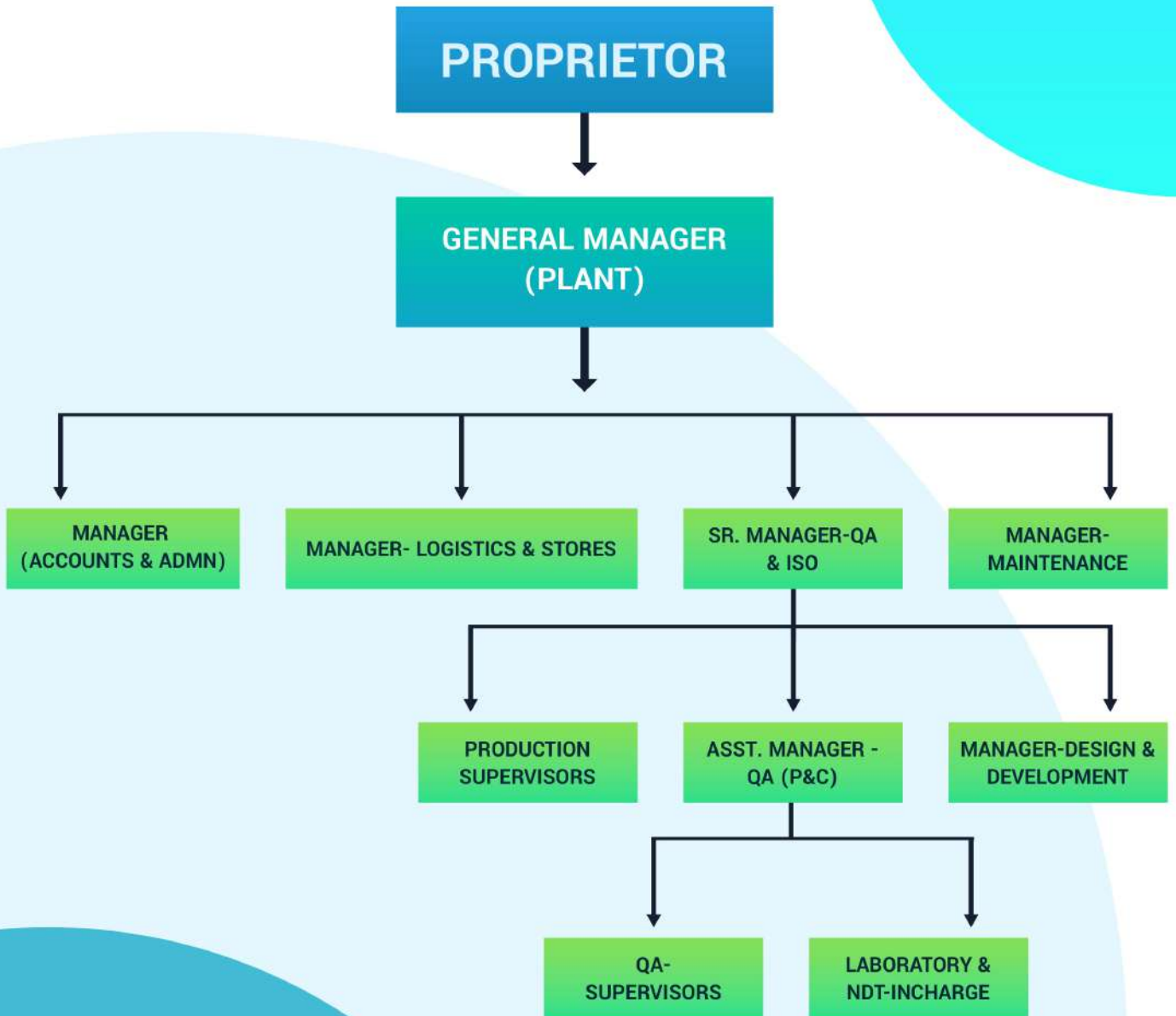


6. Fabricated Switches

PRODUCTION PROCESS OF ANINDITA INDUSTRIES



ORGANIZATION CHART



LIST OF SUPPLY OF MATERIAL

Sl No.	Item Description	Sl No.	Item Description
1	1 in 8.5 Crossing BG for 52 KG. / 60KG / 90R	24	Fish Plate.60 KG
2	Tongue Rail 52 kg. / 60KG / 90R/ 60R	25	Round Spikes
3	6400 Over Riding Switch BG for 52 KG. / 60KG	26	Channel Sleeper with fittings
4	Switch fittings for 10125 mm 52KG / 60KG	27	Gauge Cum Level
5	Switch fittings for 6400 mm 52KG / 60KG	28	Dip Lory
6	Combination Fish Plate 52 kg/90 R.	29	Push Trolley with Umbrella
7	Bearing Plate for Crossing & Switch	30	Liver Box with pull Rod
8	Steel Sleeper for Turnouts	31	Thick web Switch Fitting
9	Various Type of Rubber Pad	32	SEJ Fittings For 52Kg / 60Kg Rail
10	Various Type of GFN Liner	33	25 mm Dia Bolt for point & Crossing
11	Jim crow Stretcher Bar	34	22 mm dia Bolt for Point & Crossing
12	Stretcher Bar	35	18 mm Dia Bolt & Nut
13	Tie Plate	36	Level crossing Fittings
14	Tie Bar	37	Fittings for Diamond Crossing 1 in 8.5 60Kg / 52KG Single slip & Duble Slip
15	Slide Chair	38	Spring Setting Device
16	Fish Bolts & Nut	39	ERC Rail Clip
17	Loose Jaw	40	CMS Crossing Machining
18	Metal Liner 52 Kg / 60 Kg	41	Glued Insulation Rail Joint
19	Rail Screw	42	Hydraulic Jack
20	Plate Screw	43	H Beam Sleeper with Fittings
21	Dog Spikes	44	Switch Expansion Joints.
22	Two Way Key's		
23	Fish Plate.52 KG.		

OUR LABORATORY



LIST OF PLANT & MACHINERIES

Sl. No.	Name of Machine	Manufacturer / Supplier	Model / Machine No.	Unique S. No. of Machine	Year of Procurement	Documents establishing ownership	Capacity
01	CRANES						
1.1	EOT Cranes	Ghosh Engineering, Howrah	Local	CR-1	2019	Owned	3 t
1.2	EOT Cranes		Local	CR-2	2020		4 t
1.3	EOT Cranes		Local	CR-3	2021		4 t
02	SAWING MACHINE						
2.1	Band Saw	Pathak Machine Tools		BS-1	2022	Owned	210 sq. mm
03	HYDRAULIC PRESS MACHINE						
3.1	Horizontal Hydraulic Press	R M Enterprise	-	PR-01	2016	Owned	400 T
04	PLANING MACHINE						
4.1	Double Column Planing Machine	Sagar, Punjab	-	PL - 1	2008	Owned	8.5 M Stroke
4.2	Double Column Planing Machine	Sagar Punjab	-	PL - 2	2007		13 M Stroke
4.3	Double Column Planing Machine	NILES BEMENT POND CO., USA	-	PL - 3	2007		5 M Stroke
05	PLANO MILLING MACHINE						
5.1	Planomiller	WMW Sound Machinery	--	PM-01	2005	Owned	5 M Stroke
5.2	Planomiller		--	PM-02	2007		5 M Stroke
6.0	SHAPERS						
6.1	Shaping Machine	Shanpur	--	SH-1	2007	Owned	600mm Stroke
6.2	Shaping Machine	Shanpur	--	SH-2	2007		600mm Stroke
6.3	Shaping Machine	Joy Kali	--	SH-3	2007		600mm Stroke
6.4	Shaping Machine	Joy Kali	--	SH-4	2008		600mm Stroke
7.0	RADIAL DRILL MACHINES						
7.1	Radial Drill Machine	Sharda, Punjab	Model	RD - 1	2007	Owned	32 mm dia.
7.2	Radial Drill Machine		Sharda, Punjab	2011 BR-615	RD - 2		2007
8.0	MILLING MACHINE						
8.1	Vertical Milling Machine	WMW Tos Kurim	-	ML-01	2007	Owned	No. 4
	Vertical Milling Machine		-	ML-02	2007		No. 3
9.0	GRINDING MACHINES						
9.1	Double Wheel Bench Grinder	---	Local	GR-1	Old	Owned	12 inch
9.0	PORTABLE GRINDING M/c.						
9.1	Angle Grinder	Dewalt	---	AG-01	2021	Owned	7 inch
		Dewalt	---	AG-02	2021		7 inch
		Dewalt	---	AG-03	2021		7 inch
		Makita	---	AG-04	2021		7 inch
		Makita	---	AG-05	2021		5 inch
10.	OTHER MACHINES						
10.1	Power Press Machine	Local		PP -01	2007	Owned	25mm thk. plate
10.2	MIG/CO2 Welding Set						
	MIG/CO2 Welding Set	ESAB WELDTRONIC WELDTRONIC ESAB	GMAW	MIG -01	2016	Owned	400 Amp
	MIG/CO2 Welding Set		400	MIG-02	2020		600 Amp
	MIG/CO2 Welding Set		GMAW	MIG-03	2020		600 Amp
	MIG/CO2 Welding Set		600	MIG-04	2020		400 Amp
			GMAW				
			600				
			GMAW				
			400				
10.3	Gas Welding /Cutting Set	Local	N.A.	GC - 01	2015	Owned	--
10.4	Sand blasting equipment with Compressor	Local	N.A.	C - 01	2015	Owned	200 cfm, 10HP
10.5	Lathe Machine	Local	N.A.	LM-01	2007	Owned	6 feet
10.6	CNC PLANOMILLING MACHINE	Indigenous	N.A.	CNC 1	2024	Owned	13.000 m stroke

LIST OF LABORATORY EQUIPMENTS / MEASURING INSTRUMENTS

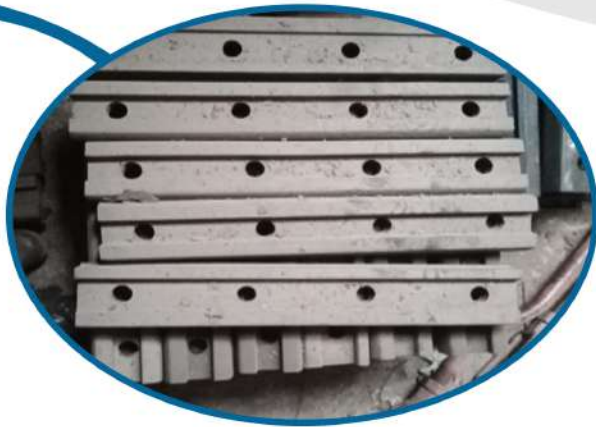
Sl. No.	Name of Machine	Manufacturer / Supplier	Model / Machine No.	Unique S. No. of Machine	Year of Procurement	Documents establishing ownership	Capacity
1	Rockwell Hardness Tester	Fine Testing M/c.	TRS		2022	Owned	150 Kgf
2	Brinell Hardness Tester	Fine Testing M/c.	MIRAJ/MODEL TKB-3000		2022	Owned	3000 Kgf
3	Impact Testing Machine	Fine Testing M/c.	FIT-300-N		2022	Owned	300J
4	Universal Testing Machine	Fine Manufacturing Industries	TFUC-400 (Servo)		2022	Owned	40t
5	Metallurgical Microscope with Image Analyzer	Apollo Instruments & Equipment			2022	Owned	50X to 500X
6	Polishing Machine	Apollo Instruments & Equipment			2022	Owned	
7	Ultrasonic Flaw Detector	EECI	DS324	S4257HVA	2022	Owned	0mm to 5m
8	Magnetic Particle Testing M/c.	EECI			2022	Owned	150mm pole spacing
9	Steel Scale	Freemans	--		2022	Owned	300mm
10	Steel Tape	Freemans	--		2022	Owned	15000mm
11	Steel Tape	Kris steel	--		2022	Owned	5000mm
12	Venire Calipers	Mitutoyo	--		2022	Owned	300mm
13	Spectrometer	VAS	GOLD PLUS X		2024	Owned	

RDSO APPROVED & SUPPLIED PRODUCTS



Fabricated Crossing

Over Riding Curved Switches



**Fish Plate 60Kg/ 52Kg/90R/
Combination**

Various Types of Blocks



Spring Setting Device (SSD)

RDSO APPROVED & SUPPLIED PRODUCTS



Bearing Plates for Fan shaped Switch

ISEJ Fittings for 52Kg / 60Kg Rail



CMS CROSSING

Stretcher Bar



Elastic Rail Clip

RDSO APPROVED & SUPPLIED PRODUCTS



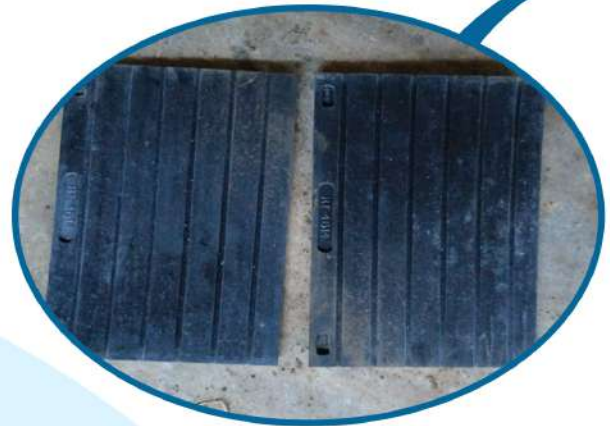
Slide Chair

Glued Insulation Rail Joint



Various Types of Grooved Rubber Pad

H-BEEM



Various Types of GFN & Metal Liner



RDSO APPROVED & SUPPLIED PRODUCTS



TIE PLATE



TIE BAR



Various Types of Unified Hardened Washer



Liver Box with pull Rod



Various Types of Bolt & Nuts Washer

LIST OF MAJOR CLIENTS



सेल SAIL



**VIZAG
STEEL**
Pride of Steel

adani



**Ambuja
Cement**



K&R RAIL Engineering Limited
(Formerly Axis Rail India Ltd.)



THE HINDUSTHAN GROUP

CALCUTTA SPRINGS LIMITED



OPGC
Power for Progress



Managed by **SANTOSH RUNGTA** Group

RUNGTA
Group of Institutions



TITAGARH
RAIL SYSTEMS LIMITED

